

Histone H1 (Mono Methyl Lys25) Mouse pAb

Cat No.: SJ-AB30974



Applications

Reactive Species

Human, Mouse, Rat

Specificity

The antibody detects endogenous Histone H1 (Mono Methyl Lys25) protein.

Validated Applications

WB

Recommended Dilution

WB 1:500-1000

Product Information

Antibody Type

Mouse pAb

Immunogen

Synthetic Peptide of Histone H1 (Mono Methyl Lys25)

Modification

Methy

Isotype

N/A

Host

Mouse

Conjugation

Unconjugated

Clonality

Polyclonal

Form

Liquid

Clone No.

N/A

Concentration

N/A

Purification Method

Immunogen affinity purification

Storage Buffer

PBS (pH 7.4) containing 0.5% BSA, 0.02% New type preservative N as Preservative and 50% Glycerol.

Storage Conditions

Store at 2-8°C for up to 2 weeks. Store at -15°C to -25°C for 1 year. Aliquot to avoid freeze / thaw cycle.

Background Information

Organism

Human

Gene ID

3024/3006/3007/3008

UniProt ID

Q02539/P16403/P16402/P10412

Gene Name

HIST1H1A/HIST1H1C/HIST1H1D/HIST1H1E

Recommended Name

Histone H1.1/Histone H1.2/Histone H1.3/Histone H1.4

Calculated MW

17-25 kDa

Short Name

N/A

Observed MW

N/A

Alternative Names

H1K25ME1, HIST1H1A, H1F1, Histone H1.1, Histone H1a, HIST1H1C, H1F2, Histone H1.2, Histone H1c, Histone H1d, Histone H1s-1, HIST1H1D, H1F3, Histone H1.3, Histone H1c, Histone H1s-2, HIST1H1E, H1F4, Histone H1.4, Histone H1b, Histone H1s-4

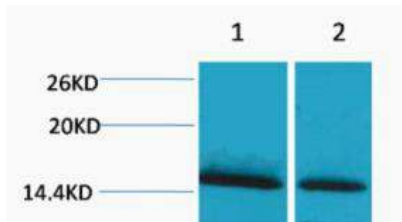
Function

function:Histones H1 are necessary for the condensation of nucleosome chains into higher order structures.,similarity:Belongs to the histone H1/H5 family.,

Subcellular Location

Nucleus . Chromosome . Mainly localizes in euchromatin.

Validation Data



Western blot analysis of 1) HeLa, 2) 3T3, diluted at 1:2000.. Secondary antibody was diluted at 1:20000

NOTICE: For research use only. Not for therapeutic or diagnostic purposes.

Contact

For technical support and original validation data for this product please contact:

T: 400-018-6916

E: support@sanjingbio.com

W: www.sanjingbio.com